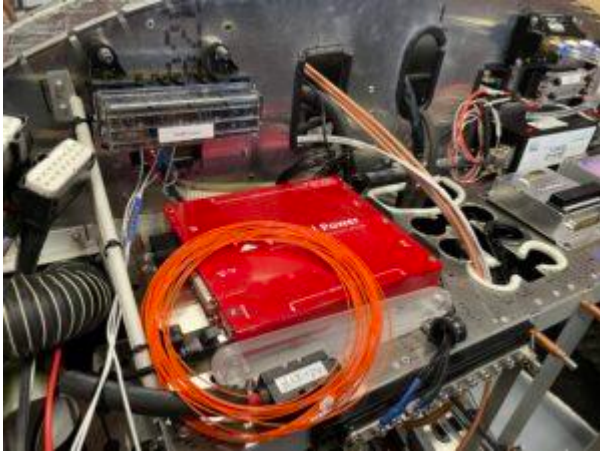
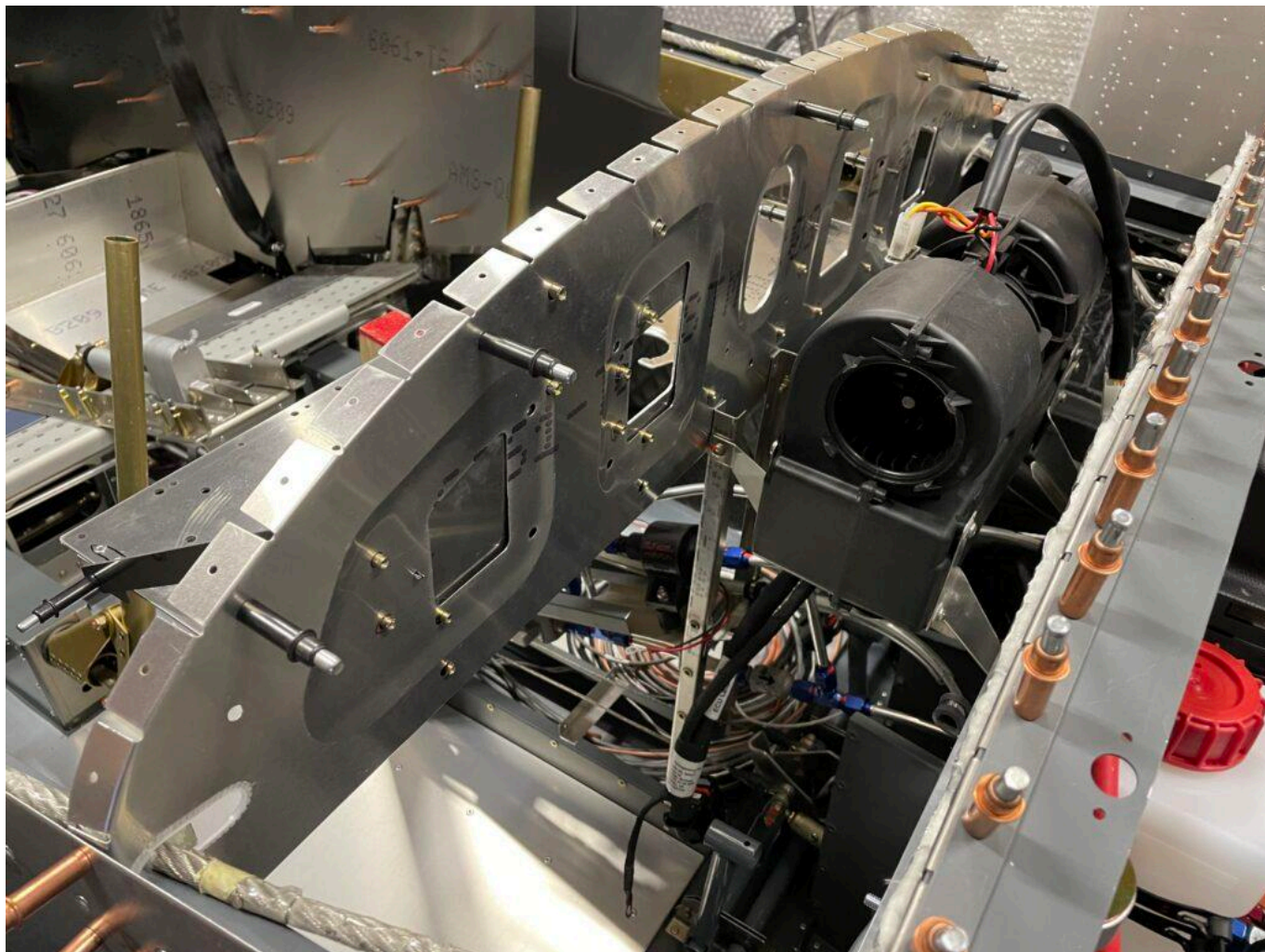


Avionics Rack

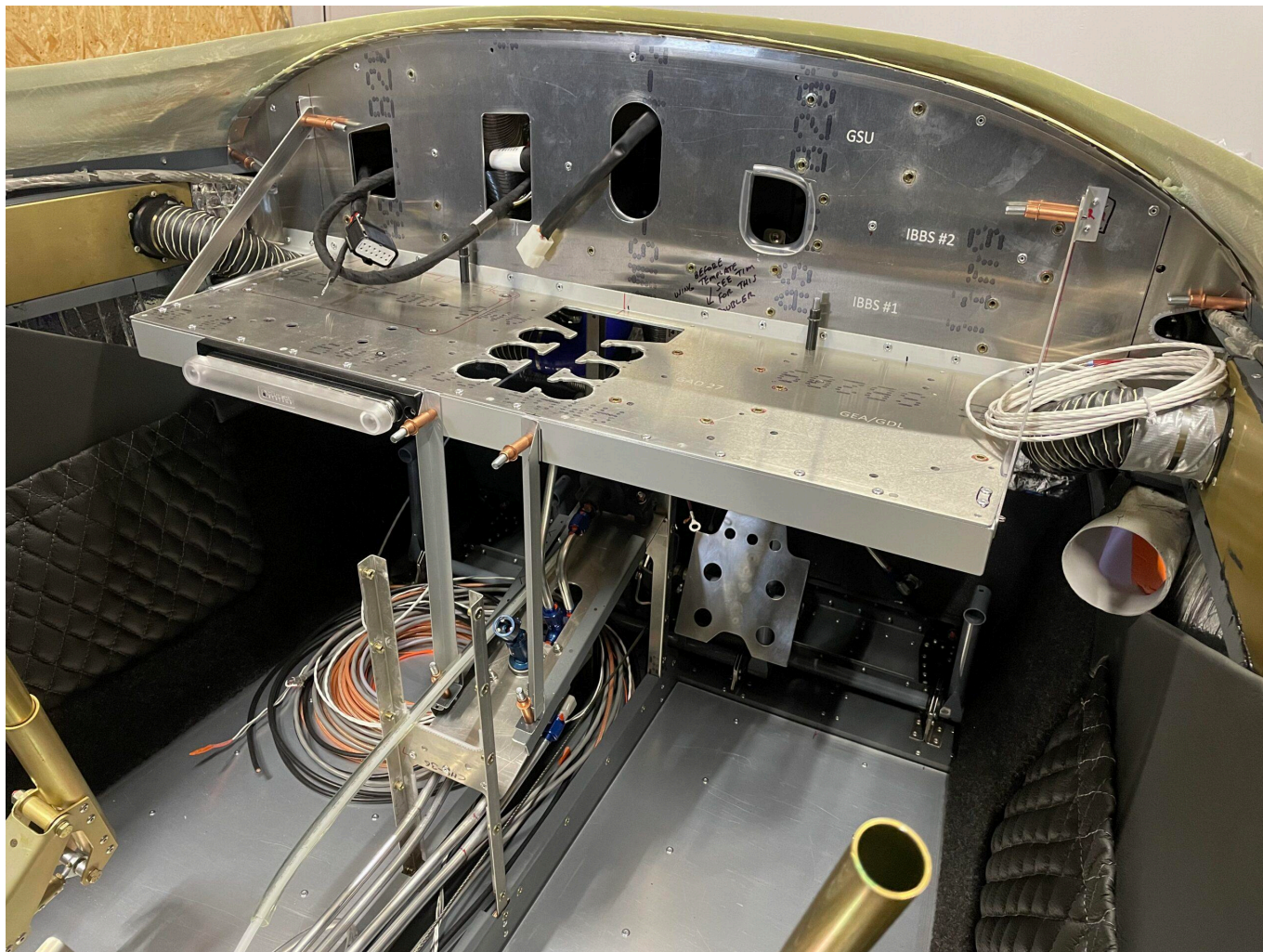
2022-08-15



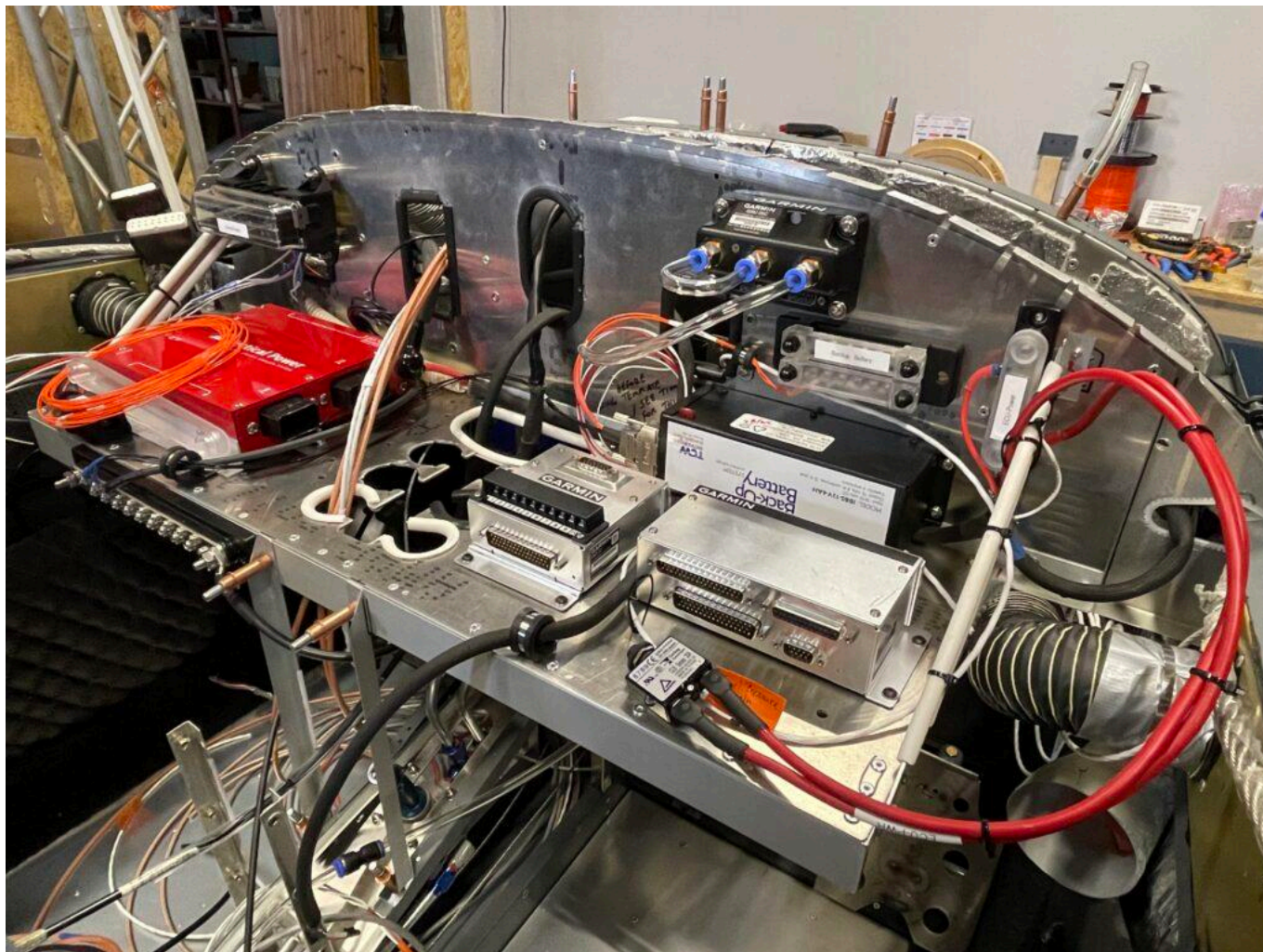
To integrate the components into the [MWPB](#) avionics rack, the doubler will be mounted to the avionics rib. The ECU will be installed beneath the VPx to guarantee that the engine cables remain sufficiently long and the ECU is conveniently accessible. Furthermore, we will employ a small bottle featuring three air quick-connect ports for the rear and new front static port location, which will allow us to use either location or both during flight testing.



new holes for all the rivnuts



empty tray needs support from below

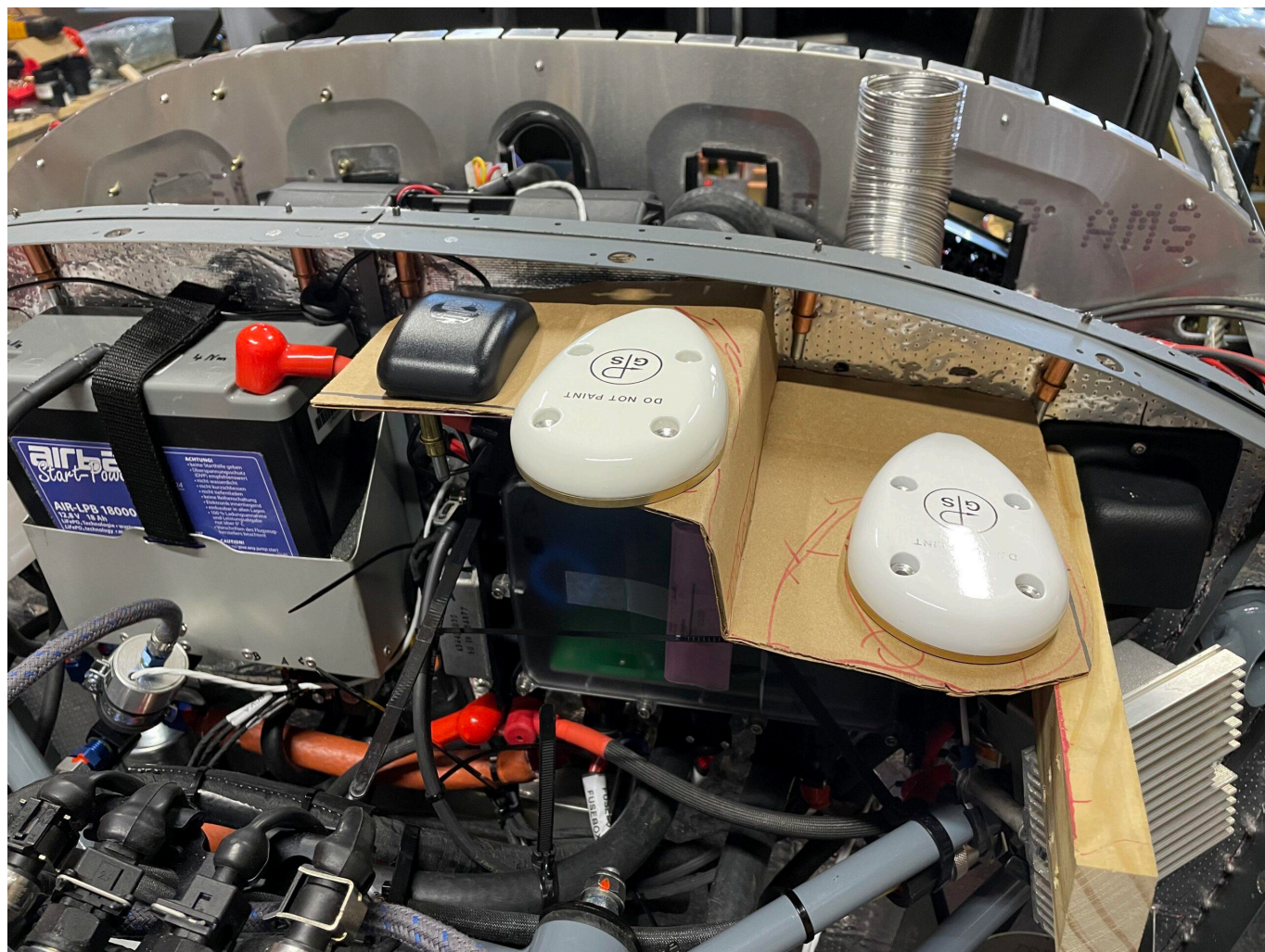


component layout

GPS Antennas

The antenna mount provided by the factory positions the antennas very close to the metal airframe and the cowling top air vent, which may obstruct the sky view. Therefore, I am using a cardboard template to find a better position for the antennas that provides an unobstructed view of the sky.







2 x GA35 1 x GA56